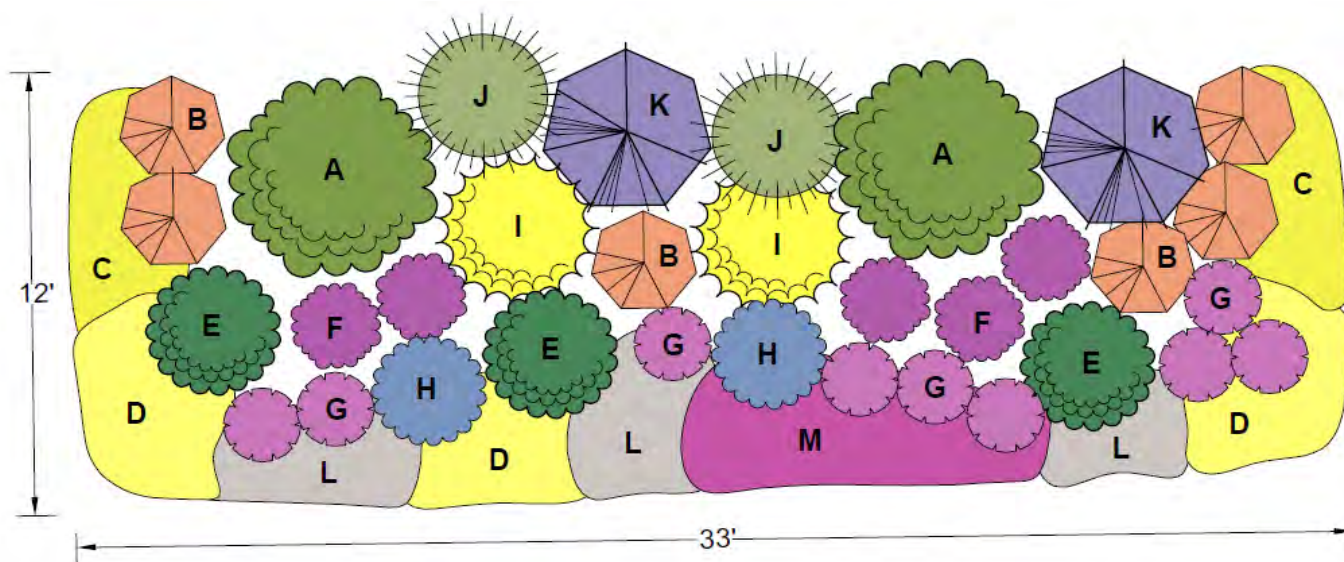


XERISCAPE DESIGN SOLUTIONS *Lauren Springer Ogden Collection:*

PRACTICAL AND INSPIRING DESIGNS WITH REGIONAL RESONANCE USING PLANT SELECT® PLANTS, BY ONE OF AMERICA'S BEST-KNOWN HORTICULTURISTS AND GARDEN DESIGNERS.

CHAPARRAL/XERIC MIXED BORDER

This shrubby garden has a natural feel to it, blending native and adapted plants in a casual but full manner. Foliages are attractive and mostly fine-textured, with several evergreen plants to add winter interest. Long-bloomers add color from late spring to fall. Many of the flowers attract butterflies, hummingbirds, and bees. For added late winter and early spring color, consider adding the bulbs listed below amid the lower-growing plants in the foreground of the planting. To add interest the first couple of years in the area where the shrubs are filling in, consider planting the short-lived plants listed for that purpose. This design can be used as a perimeter planting: just repeat to the length needed. It can also be widened into a broader bed with the larger plants in the center or spine by planting its mirror image on the other side. This garden needs full sun and dry conditions, and will thrive in a lean, unamended soil.



Designer Lauren Springer Ogden

Lauren Springer Ogden designs both public and private gardens. Her book *The Undaunted Garden* is the mountain region's all-time best-selling garden book. She also coauthored the award-winning *Plant-Driven Design* and *Passionate Gardening*. She has also introduced numerous plants to the nursery trade, and Lauren and her work have been featured in national and international publications, and on radio and television.

www.plantdrivendesign.com

PLANT LIST: Plant Select® plants are in bold

- A. Apache Plume **-or-** Fernbush (2)
- B. Sunset Hyssop **-or-** Sonoran Sunset® Hyssop (6)
- C. Kannah Creek® Buckwheat **-or-** Snow Mesa Buckwheat (12)
- D. 'Shimmer' Evening Primrose (12) **-or-** Silver Blade® Evening Primrose (9)
- E. Panchito Manzanita **-or-** Pawnee Buttes Sand Cherry (3)
- F. Mojave Sage **-or-** Blue Flame Hyssop (5)
- G. Red Rocks® Penstemon **-or-** Greek Valerian (9)
- H. Big Catmint (2)
- I. Spanish Gold® Broom **-or-** Lydian Broom (2)
- J. Giant Sacaton **-or-** Heavy Metal Switchgrass (2)
- K. Russian Sage **-or-** Blue Mist Spirea (2)
- L. Sea Foam Artemisia (6) **-or-** Partridge Feather (16)
- M. Winecups (3) **-or-** Table Mountain® Ice Plant (15)

Additional Plants:

- Corsican Violet (12) randomly in front 2' of bed to self-sow year after year

If desired, fill in around shrubs with the following short-lived plants while the shrubs grow to size:

- Red Feathers (9)
- Prairie Jewel® penstemon (9)
- Grand Mesa penstemon (9)
- Moon Carrot (9)

Bulbs:

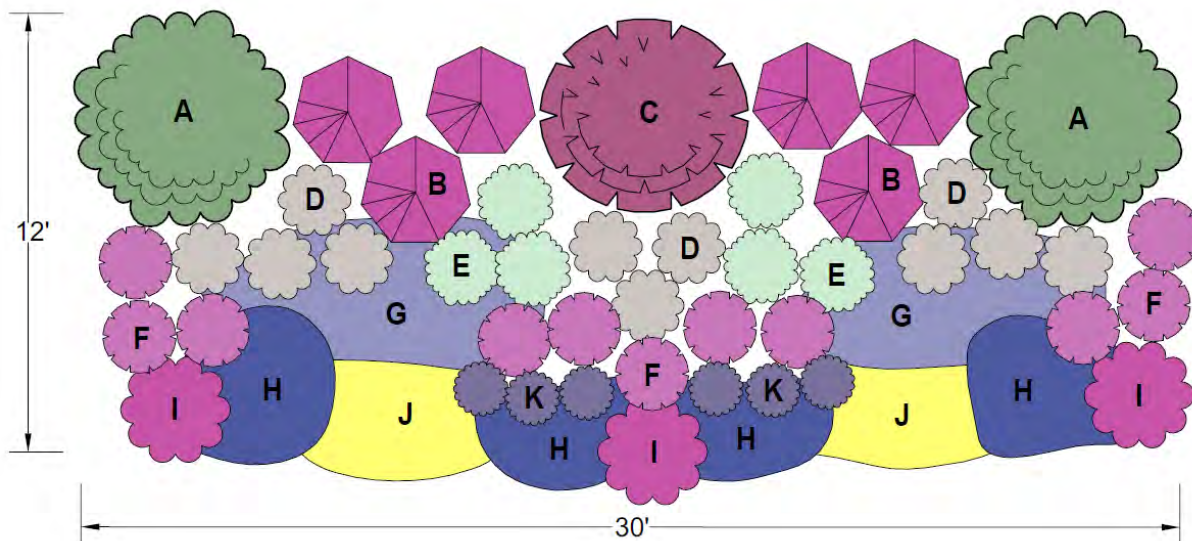
- Blue Snow Iris (50)
- Deep Blue Grape Hyacinth (50)
- Species Tulip 'Bright Gem' or 'Bronze Charm' (50)
- Lipstick Tulip 'Tinka' or 'Cynthia' (50)

Find more designs and
inspiration at plantselect.org!



WATERWISE COTTAGE

This garden features soft colors and textures, blended with silver foliage. Shrubs and easy-care perennials that look equally good out of bloom anchor the planting, while flowers ebb and flow from spring through fall. For additional early color, consider planting the bulbs listed amid the lower-growing plants in the foreground. To add interest the first couple of years in the area where the shrubs are filling in, consider planting the short-lived plants listed for that purpose. This is also a superb bee-attracting garden, and several of the plants offer fragrant flowers and foliage. Most but not all of the plants are deer-resistant. This design can be used as a perimeter planting: just repeat for whatever length is necessary. It can also be widened into a broader bed with the larger plants in the center or spine by planting its mirror image on the other side. All the plants are sun-loving and drought-tolerant, growing best in a well-drained soil and need little or no amendment.



Designer Lauren Springer Ogden

Lauren Springer Ogden designs both public and private gardens. Her book *The Undaunted Garden* is the mountain region's all-time best-selling garden book. She also coauthored the award-winning *Plant-Driven Design* and *Passionate Gardening*. She has also introduced numerous plants to the nursery trade, and Lauren and her work have been featured in national and international publications, and on radio and television.

www.plantdrivendesign.com

PLANT LIST:

Plant Select® plants are in bold

- A. **Cheyenne® Mock Orange** -or- **Blue Velvet® Honeysuckle** (2)
- B. **Sonoran Sunset® Hyssop** -or- **Blue Blazes Hyssop** (6)
- C. **Redleaf Rose** -or- **Silver Fountain Butterfly Bush** (1)
- D. **Silver Sage** -or- **Giant Lamb's Ears** (11)
- E. **Dalmatian Daisy** -or- **Anthea Yarrow** (6)
- F. **Shadow Mountain® Penstemon** -or- **Red Rocks® Penstemon** (11)
- G. **Little Trudy® Catmint** (14) -or- **Select Blue Catmint** (10)
- H. **Platinum® Sage** -or- **Silverton® Bluemat Penstemon** (20)
- I. **Winecups** (3) -or- **Table Mountain® Ice Plant** (15)
- J. 'Shimmer' evening primrose (10) -or- **Silver Blade® Evening Primrose** (6)
- K. **Purple Mountain® Sun Daisy** -or- **Compact English Lavender** (6)

Additional Plants:

- **Corsican Violet** (12) randomly in front 2' of bed to self-sow year after year

If desired, fill in around shrubs with the following short-lived plants while the shrubs grow to size:

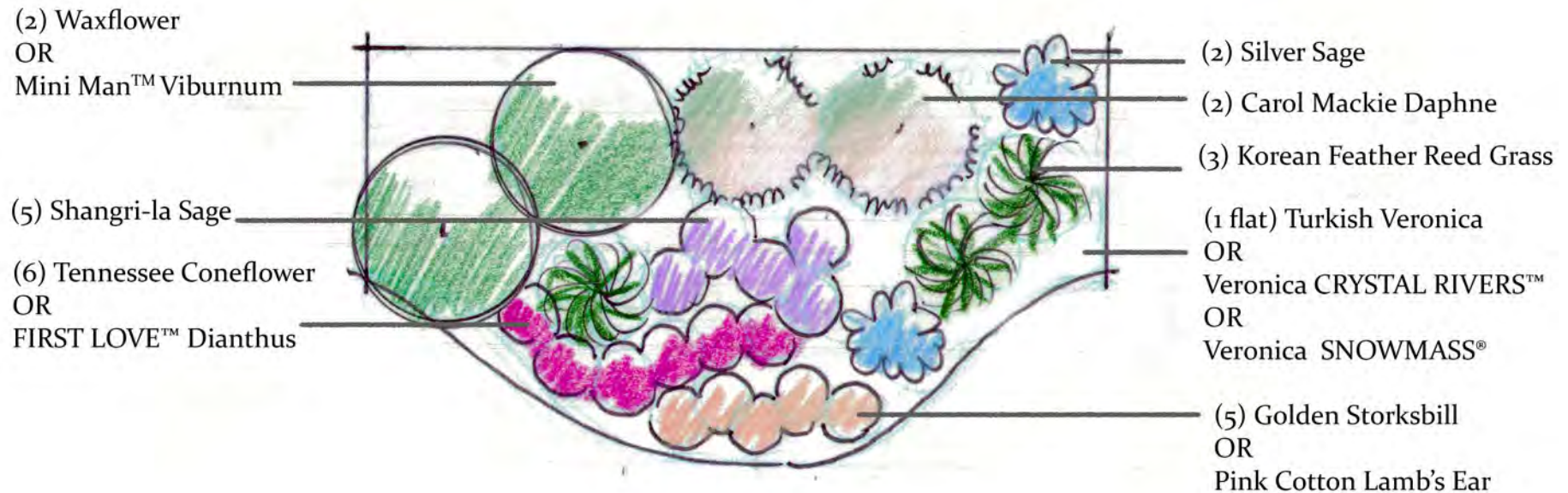
- **Red Feathers** (9)
- **Prairie Jewel® Penstemon** (9)
- **Grand Mesa Penstemon** (9)
- **Moon Carrot** (9)

Bulbs:

- **Star of Persia** (25)
- **Purple Snow Iris** (50)
- **Soft Blue Grape Hyacinth** (50)
- **Grecian Windflower** (50)
- **Lipstick Tulip** (50)

Find more designs and inspiration
at plantselect.org!





PART SHADE PLANTING DESIGN 17' X 8'

This drought tolerant planting design is perfect for foundation planting in recesses of buildings or around retaining walls.

PLANT LIST: Common Name

Waxflower (2) or Mini Man viburnum
Shangri-La Sage (5)
Tennessee Coneflower (6) or FIRST LOVE dianthus
Silver Sage (2)
Carol Mackie daphne (2)
Korean Feather Reed grass (3)
Groundcovers in mass, Turkish veronica, CRYSTAL RIVER® or SNOWMASS®
veronicas
Golden Storksbill or Pink Cotton Lamb's Ear (5)

PLANT LIST: Botanic name

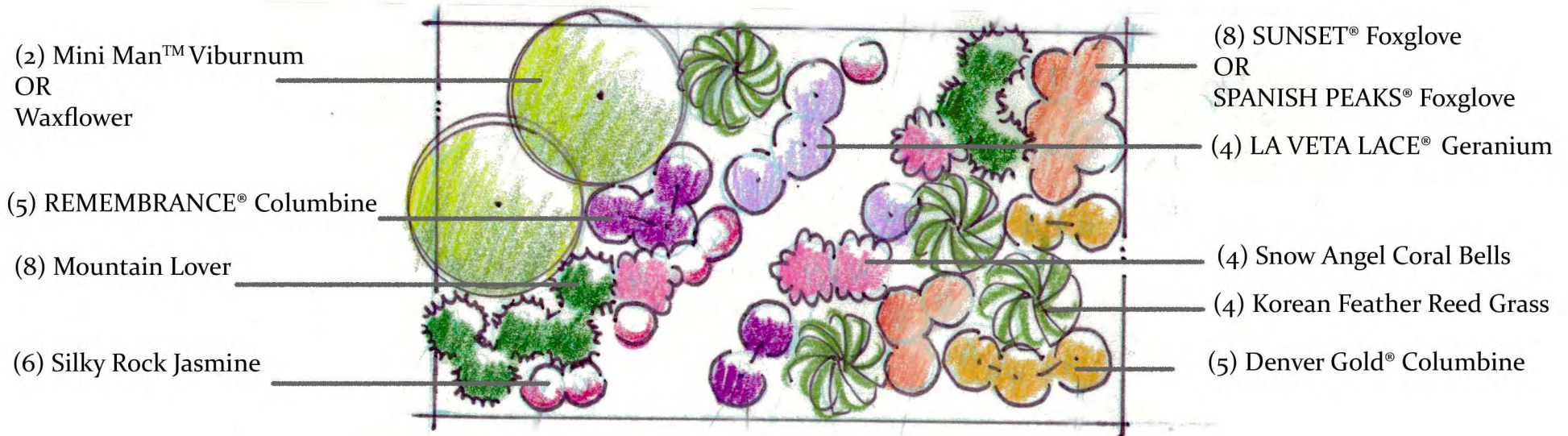
Jamesia americana (2) or *Viburnum burjaeticum* 'P017S'
Salvia moorcroftiana x *indica* (5)
Echinacea tennesseensis (6) or *Dianthus* 'First Love'
Salvia argentea (2)
Daphne x *burkwoodii* 'Carol Mackie' (2)
Calamagrostis brachytricha (3)
Groundcovers in mass, *Veronica lianensis*, *Veronica* 'Reavis' or *Veronica* 'P018S'
Erodium chrysanthum or *Stachys* x *lavandulifolia* (5)

Visit www.PlantSelect.org/where-to-buy/ to source Plant Select plants or email Director@PlantSelect.org with questions.

Designed by: Annie Barrow

Manager, Horticulture Outreach Programs

annie.barrow@botanicgardens.org



DRY SHADE PLANTING DESIGN 17' x 9'

This dry shade planting design offers year round texture, summer color and access through the middle as a path or for down spout.

PLANT LIST: Common Name

Mini Man viburnum (2) or Waxflower
REMEMBERANCE columbine (5)
Mountain Lover (8)
Silky Rock Jasmine (6)
SUNSET® foxglove (8) or SPANISH PEAKS® foxglove
LA VETA LACE geranium (4)
Snow Angel coral bells (4)
Korean Feather Reed grass (4)
DENVER GOLD® Columbine (5)

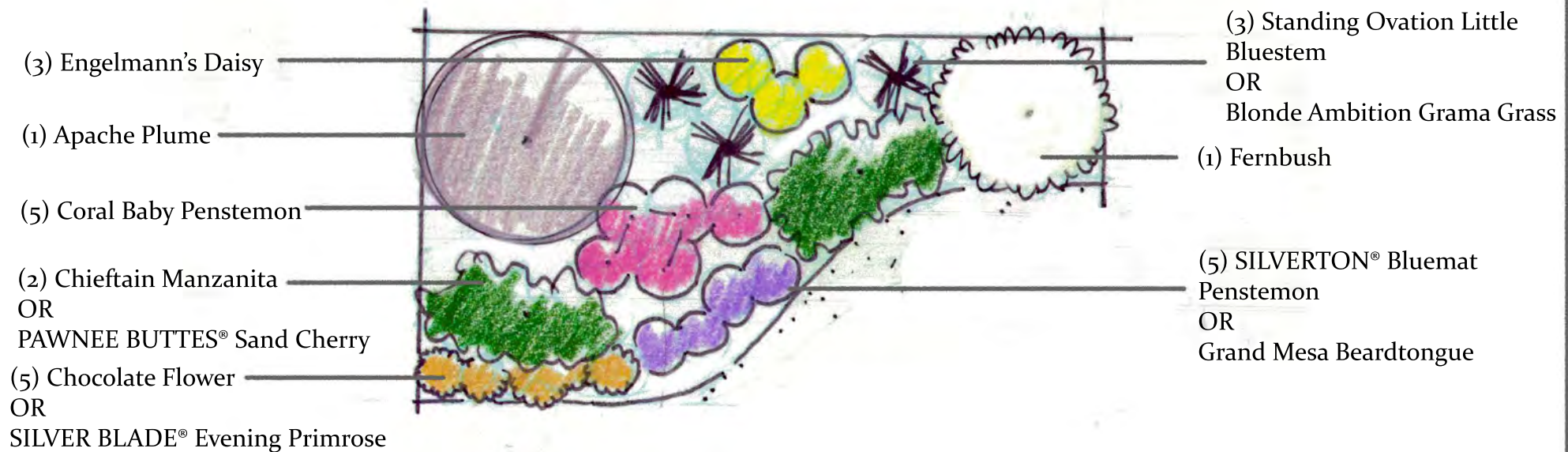
PLANT LIST: Botanic name

Viburnum burjaeticum 'P017S' (2) or *Jamesia americana*
Aquilegia 'Swan Violet & White' (5)
Paxistima canbyi (8)
Androsace sarmentosa 'Chumbyi' (6)
Digitalis obscura (8) or *Digitalis thapsi*
Geranium magniflorum 'P013S' (4)
Heuchera sanguinea 'Snow Angel' (4)
Calamagrostis brachytricha (4)
Aquilegia chrysantha (5)

Visit www.PlantSelect.org/where-to-buy/ to source Plant Select plants or email Director@PlantSelect.org with questions.

Designed by: Annie Barrow

Manager, Horticulture Outreach Programs
annie.barrow@botanicgardens.org





NATIVE PLANTING DESIGN 10' x 16'

This native plant design offers an urban landscape plan feel utilizing plants native to Colorado plus one plant (Fernbush) that is native to states west of CO.

PLANT LIST: Common Name

Engelmann's Daisy (3)
Apache Plume (1)
Coral Baby penstemon (5)
Chieftain manzanita (2) or PAWNEE BUTTES® sand cherry
Chocolate flower (5) or SILVER BLADE® evening primrose
Standing Ovation little bluestem (3) or Blond Ambition blue grama grass
Fernbush (1)
SILVERTON® bluemat penstemon (5) or Grand Mesa beardtongue

PLANT LIST: Botanic name

Engelmannia peristenia (3)
Fallugia paradoxa (1)
Penstemon 'Coral Baby' (5)
Arctostaphylos x coloradoensis 'Chieftain' (2) or Prunus besseyi 'P011S'
Berlandiera lyrata (5) or Oenothera macrocarpa subsp. incana
Schizachyrium scoparium 'Standing Ovation' (3) or Bouteloua gracilis 'Blonde Ambition'
Chamaebatiaria millefolium (1)
Penstemon linariodes var. coloradoensis (5) or Penstemon mensarum

Visit www.PlantSelect.org/where-to-buy/ to source Plant Select plants or email Director@PlantSelect.org with questions.

Designed by: Annie Barrow

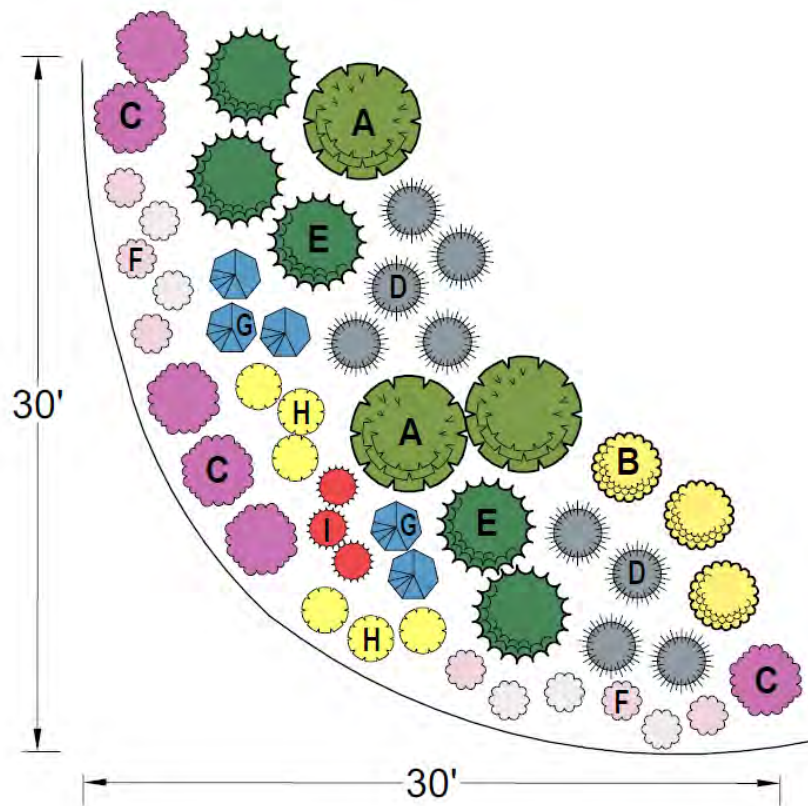
Manager, Horticulture Outreach Programs

annie.barrow@botanicgardens.org

COLORADO WATERSMART NATIVE BORDER

This shrub and perennial border features species and selections of native plants from the drier regions of Colorado. The plants chosen will provide interest in all seasons and evoke the natural beauty of our prairie and foothill habitats.

The water needs of the plants in this border are very low and once established irrigation would only be advised when extended periods of dry and warm weather occur. The design layout can be repeated to cover longer bed areas.



PLANT LIST:

Plant Select® plants are in bold

- A. **Apache Plume** -or- Tall Blue Rabbitbrush (3)
- B. **Baby Blue Rabbitbrush** -or- Dwarf Leadplant (3)
- C. **Winecups** -or- Colorado Four O'Clock (5)
- D. **Blonde Ambition Blue Grama Grass** -or- The Blues Little Bluestem Grass (9)
- E. **Panchito Manzanita** -or- Soapweed Yucca (5)
- F. **Prairie Lode Sundrops** -or- Tufted Evening Primrose (11)
- G. **Grand Mesa Penstemon** -or- Rocky Mountain Penstemon (5)
- H. **Kannah Creek Buckwheat** -or- Prairie Coneflower (6)
- I. **Bridges' Penstemon** -or- Plains Gayfeather (3)

Designer Loretta Mannix

Northern Front Range horticulturist and landscape designer Loretta Mannix specializes in designing water-wise landscapes. She owns and operates The Horticulture Consultant and offers services including landscape design, horticulture consulting and plant problem diagnosis.

www.thehortconsult.com

Find more designs and inspiration
at plantselect.org!